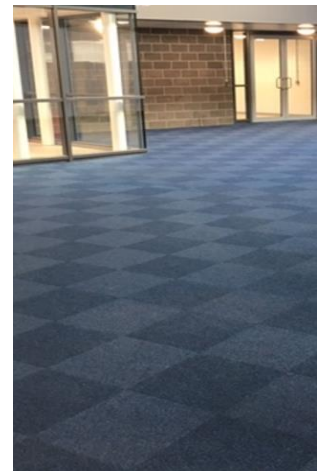
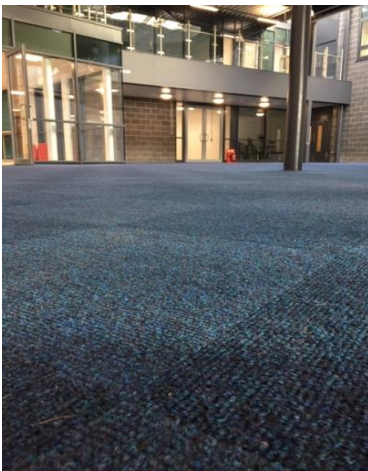
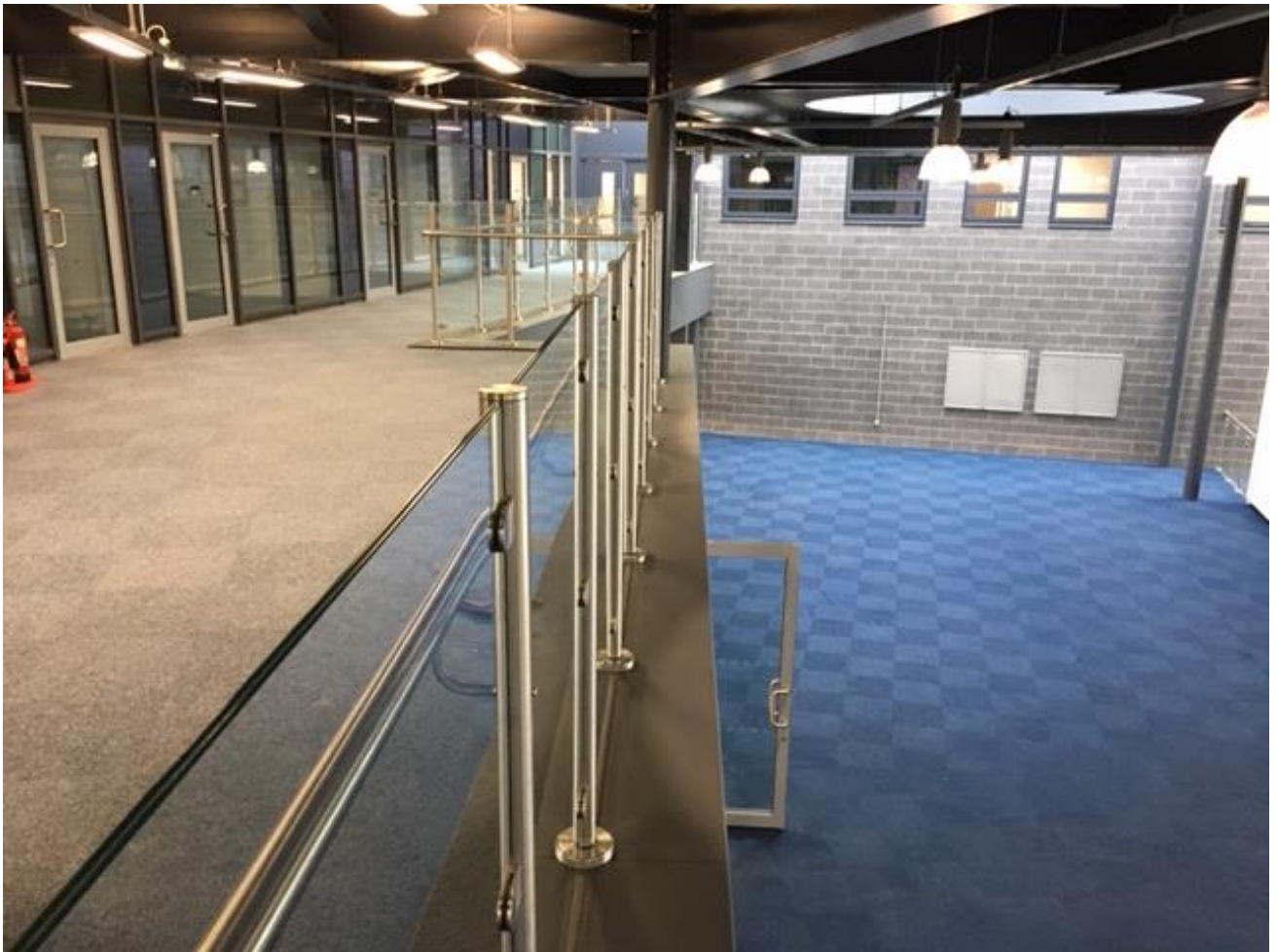




Whitehaven Campus



In 2019, new £33 million state of the art facilities were opened within the 'Campus Whitehaven' project. It is a busy academy which required a durable and robust flooring solution for these open plan spaces. Rawson's Spikemaster polypropylene ribbed tile provided that solution. An extremely dense carpet tile designed ideally for areas requiring that added resistance with exceptional sound reduction and durability. The Main Contractor, Wates Construction, chose Rawson's product for its renowned durability in 2 colours of Cobalt and fjord blue. A project installed by John Abbot flooring.



RAWSON
CARPET SOLUTIONS

Get in touch with our creative sales team for more information and technical knowledge.

+44 (0) 1924 382860 rcsales@werawson.co.uk

www.rawsoncarpetsolutions.co.uk

